

School Redevelopment Project

2018-2020



How did we get here?

- 10 year capital works programme began in February 2011.
- Earthquakes.
- All projects combined (10 year plan, modernisation, quake repairs/insurance, watertightness).

Timeline

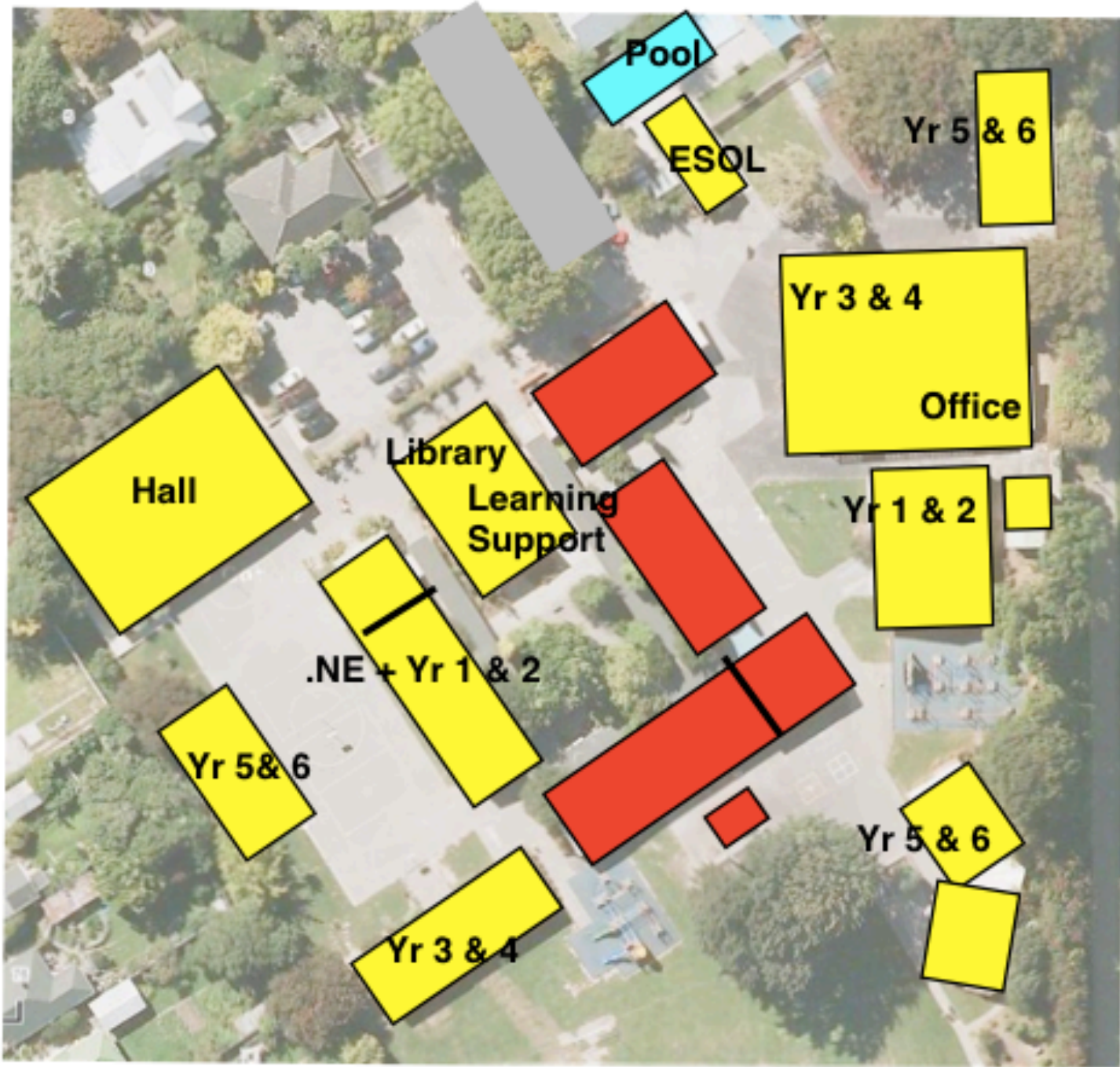
- Current - enablement works underway.
- December 8 - contractor moves onto site.
- Week of 10 December - Harakeke, Kahukura, Learning Support, boiler and admin' buildings vacated.
- 18 December - last day of term.
- 19 December - demolition prep' work begins.
- January - power supply relocation & asbestos removal.
- 28 January - Room 11 taken away by road.
- 5 February - first day of term.

Getting ready

- Heat pumps now in for 2019 winter. Phones, alarms and data being moved to Te Puna.
- Te Puna heating plant to go in over Summer Holiday.
- End of week 10 Dec' - Harakeke to library. Kahukura to Hall. Admin to back of Te Puna. Staffroom to hall music room. = a few days in temp' locations for these classes.
- Managing roll down to 475.
- Risk assessment and site safety plans being developed for sign-off.



2019

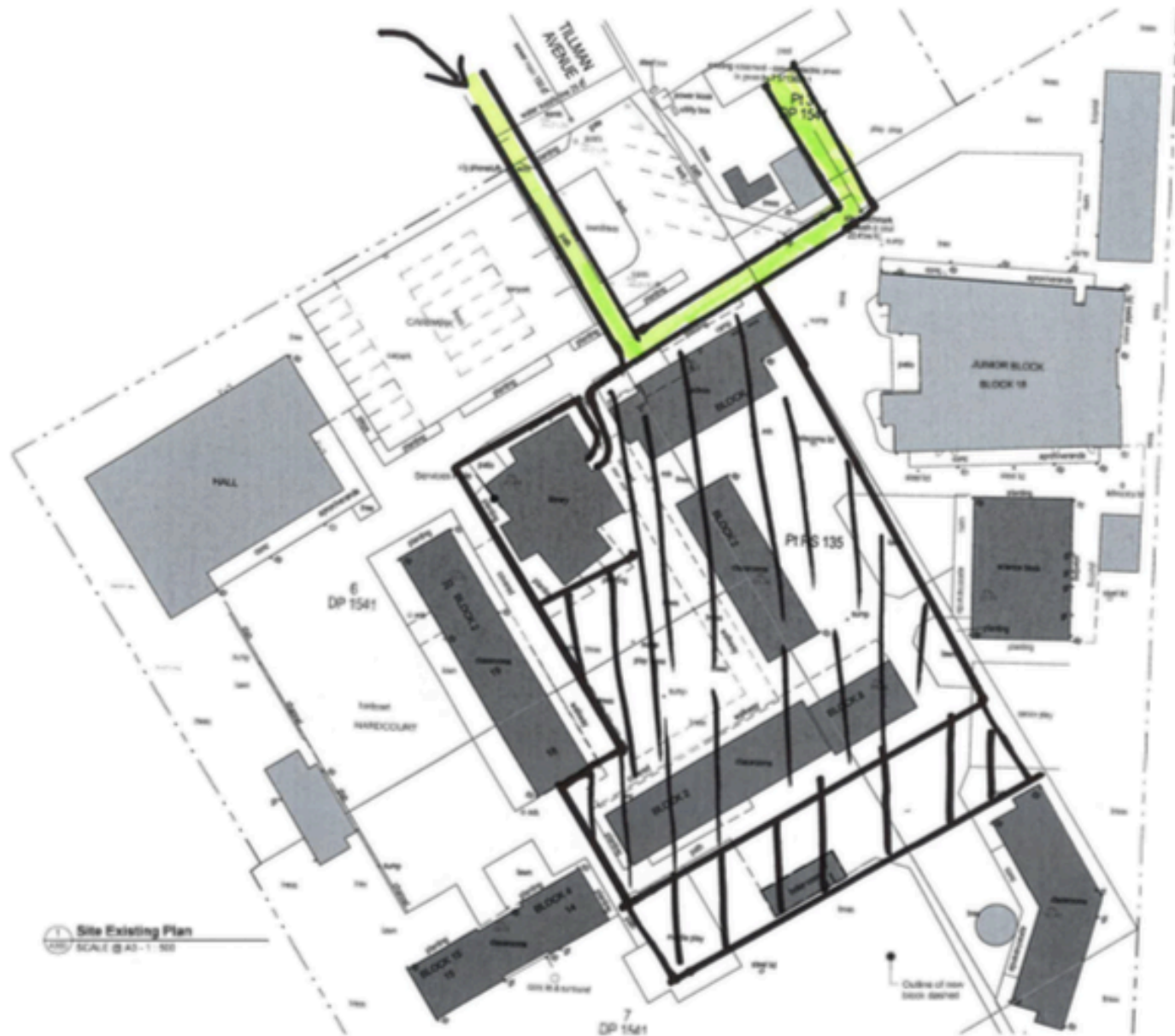


2019

- Not outdoor eating. Already testing new timeframes.
- Reduced hardcourt areas. Testing scenarios next week (*see next slide*).
- Overflow use at After School Care building and Baptist Church.
- St James Park wet grounds overflow play already tested.



Fenced area - stage 1



Final footprint



Neighbourhoods



In Pod
SCALE @A3 -



Learning St 3
SCALE @A3 -



Learning St 1
SCALE @A3 -